

Electronic Infrared Sensor Faucet LB280

Installation and User Guide



Thank you for choosing K&E Technology LB280 wall mounted electronic faucet.

Please read this instruction carefully before you start to install and use.

Overview

LB280 Wall Mounted Electronic Sensor Faucet

The sensor faucet is equipped with an infrared sensor. When hand movement is detected under the spout, a flow of water will be provided.

It can be used for both cold or pre-mixed hot water system and has a very low power consumption. We have 3 different version available: AC (230V), DC (6V) and Hydro-power generated by inlet water flow.

Sensor range is preset thus no adjustment is necessary. Plug and play concept makes sure the electronic faucet will function automatically without any further adjustment.

Limited Warranty

This product is covered by a limit warranty for 1 year from the date of purchase. Any parts which have been replaced should be returned to the manufacturer.

Any faults caused by defective materials and electronic parts malfunction are under warranty except consumable parts include filter and batteries.

Areas Not Covered by Limited Warranty

Warranty does not cover any faults or damages caused by incorrect installation including water pressure exceeds recommended limits, maintenance and unauthorized modification. Also it does not cover appearance, wear and tear of the product.

Labour and transportation cost do not included in warranty.

Technical Specifications

Product Details	Flowing pressure range	1.0 - 5.0 bar
	Activation time delay	0.5 - 1 s
	Activation distance factory setting	10 cm
	Product name	LB280
	Nominal Voltage	AC230 with transformer DC6V (4 x 1.5V AA size battery)

Characteristics

- Plug and play concept makes installation fast and easy
- Dual sensor
- Removable spout head for front maintenance
- Auto start off function
- WELS version available
- AC, DC and Hydro-power version available

Maintenance

Replacing batteries for DC version

When the sensor indicator flashes continuously, please replace the batteries immediately. Open the control box and then replace 4 x AA size alkaline batteries (be careful of positive and negative ends and all replaced batteries are new).



CAUTION!
Abrasive material or chemicals

Damage of the unit

- Do not use any abrasive material, chemicals and excessive water to clean the unit

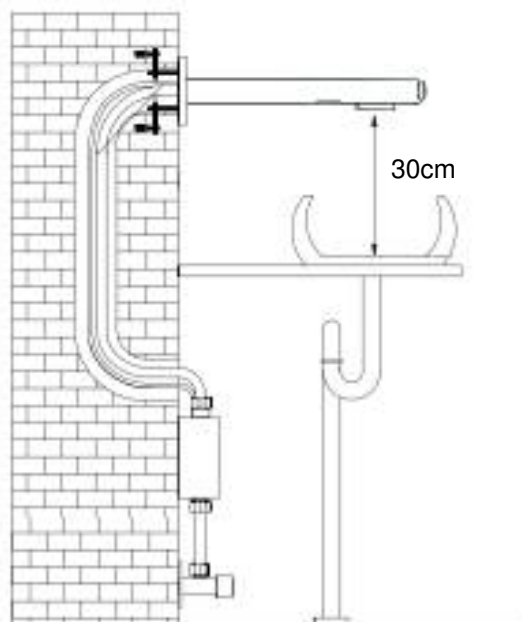
Clean the faucet, the sensor window and the control box only with neutral cleaning agents and a soft or damp cloth.

Installation

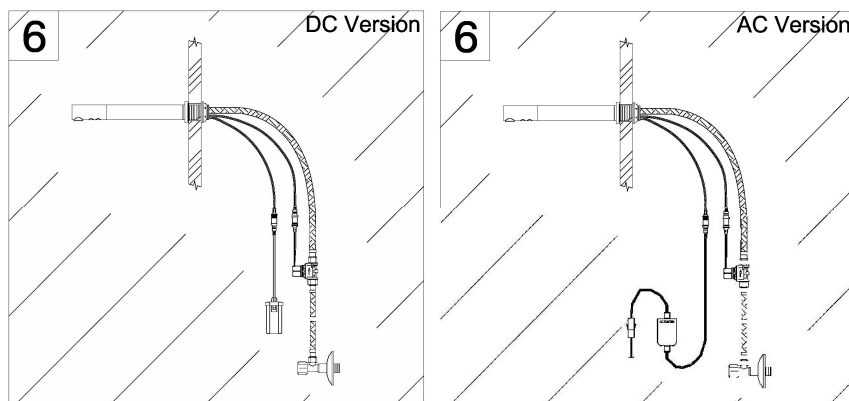
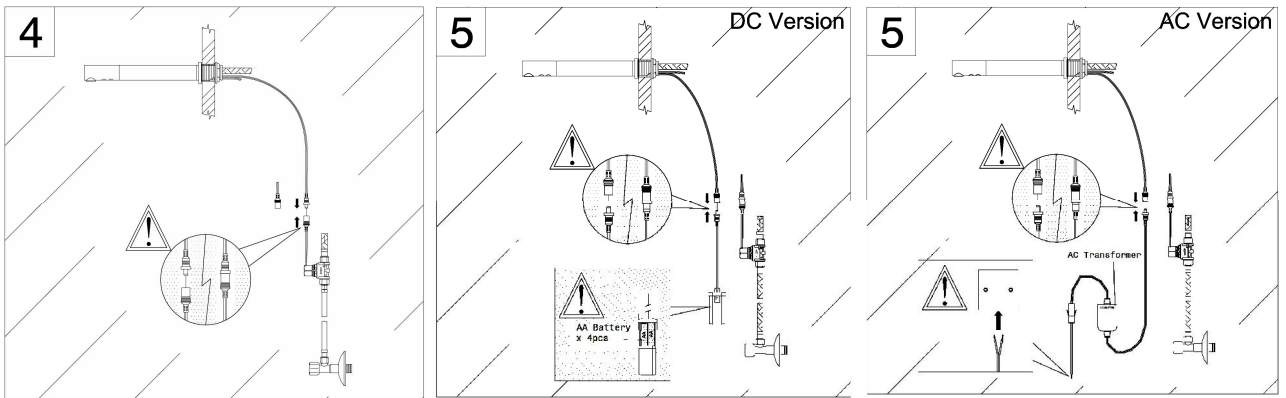
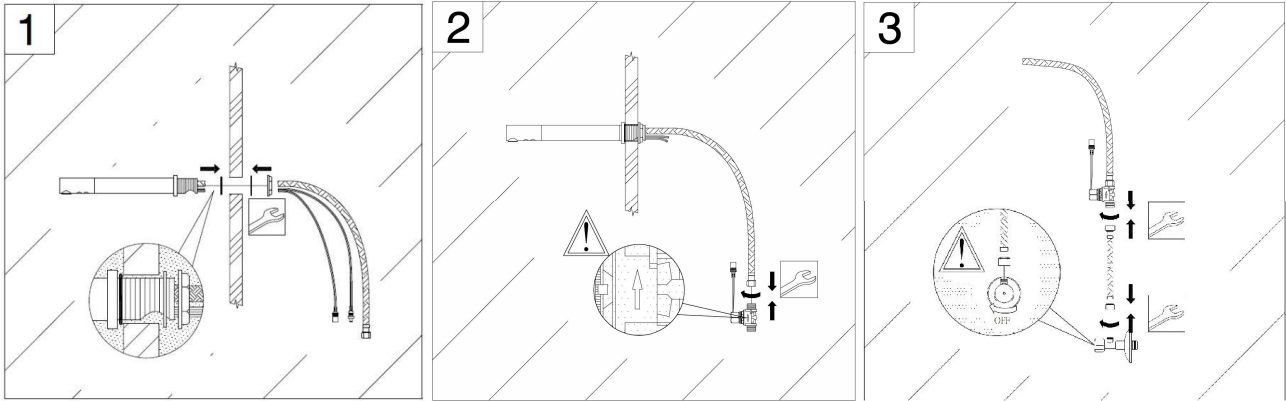


- Make sure to flush the water supply pipe thoroughly. Dirt and big particles from the water supply might lead to clogged filters in the control box and result in malfunctions.
- Install a separate efficient filter into the water supply if excessive dirt and particles occur in the water supply. This can lead to constant clogging of the solenoid filter.
- Ensure that the infrared sensor is not blocked or disturbed by any object within its detection range and that no strong light source is aimed directly to it. Moreover, shiny or reflective washbasin is not suitable for this faucet.

Installation Dimension



Installation Instructions



Operation

Operating Instructions

How to use the faucet

- 1 Place your hands under the faucet



Result

Water will flow automatically within the infrared sensor range.

- 2 Remove your hands

Result

Water will stop automatically within 0.5 - 1 seconds.

- 3 Safety switch off of faucet

After the faucet detects an object for 1 minute, water will stop automatically. The faucet will reactivate when it detects an object again.

- 4 Infrared sensor flashes continuously

When the sensor indicator flashes continuously, please replace batteries immediately.

Trouble Shooting

Problem	Cause	Clearance
No response from the faucet	<p>The sensing distance of the infrared sensor is too short</p> <p>No or low battery</p> <p>The battery connection or sensor cable is loose</p>	<p>Reconnect the power supply in order to reload factory settings</p> <p>Replace battery</p> <p>Reconnect the cables and make sure all cables are tightened</p>
Sensor indicator flashes continuously	Low battery	Replace batteries
No water flows out / very slow water flow	<p>The filter is clogged</p> <p>Angle valve is turned off</p> <p>The solenoid valve connector is loose</p> <p>The solenoid valve is faulty</p>	<p>Clean the filter</p> <p>Turn on the angle valve</p> <p>Connect it properly</p> <p>Do not attempt to repair, contact dealer for assistance</p>
Water flows continuously, faucet fails to shut off	<p>Batteries run out</p> <p>The sensor is blocked by obstructive objects</p> <p>The sensing distance is too long</p> <p>The solenoid valve is faulty</p>	<p>Replace battery</p> <p>Remove obstructive objects</p> <p>Reconnect the power supply in order to reload factory settings</p> <p>Do not attempt to repair, contact dealer for assistance</p>
Faucet turns on and off repeatedly even nobody is using it	<p>The infrared sensor surface is scratched or dirty</p> <p>The sensing distance of the infrared sensor is too close</p>	<p>Clean the infrared sensor by a soft cloth</p> <p>The infrared sensor has to be replaced if situation continues; do not attempt to repair, contact dealer for assistance</p> <p>Reconnect the power supply in order to reload factory settings</p>

© Copyright by K&E Technology Limited

We reserve all rights to this document. The recipient recognizes these rights and shall not make this document either in full or in part to third parties without prior written consent and shall not use it for any other purpose than for that for which it was presented.

16 Oct 2012